

Jayco | Eagle Fifth Wheel

# EAGLE FW

ADVENTURES AROUND EVERY BEND



**2+3**  
YEAR | YEAR  
WARRANTY



# INTERIOR DESIGN



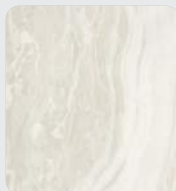
## AMERICAN CRAFTSMAN



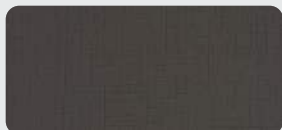
Wood



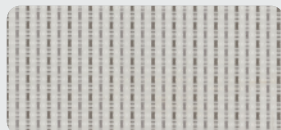
Floor



Countertop

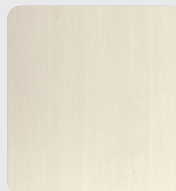


Main Fabric

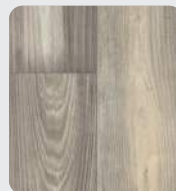


Accent Fabric

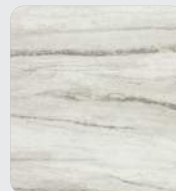
## MODERN FARMHOUSE



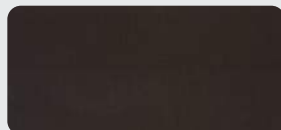
Wood



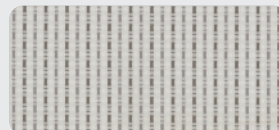
Floor



Countertop



Main Fabric



Accent Fabric

**317RLOK** OPTIONS: A, B, D, E



**319MLOK** OPTIONS: A, B, D, E



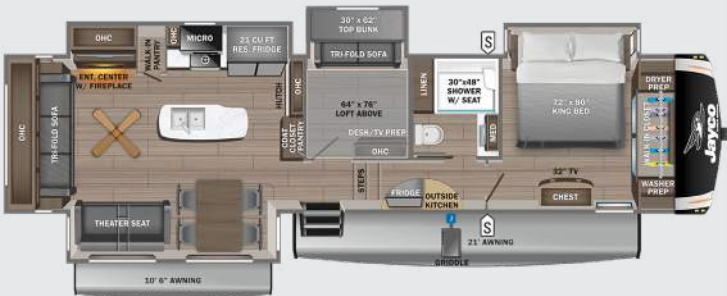
**321RST** OPTIONS: A, B, C, D, E



**335RDOK** OPTIONS: D, E



**355MBQS** OPTIONS: A, B, D, E



**370FB** OPTIONS: A, B, C, D, E



**OPTIONS**



- STORAGE**
- MICRO** MICROWAVE
- OHC** OVERHEAD CABINETS
- FRIDGE** REFRIGERATOR
- WARD** WARDROBE

**A**



DINETTE

**B**



TABLE & CHAIRS/BENCH

**C**



GRIDDLE

**D**



13 CU. FT. FRIDGE

**F**



QUEEN BED

# STANDARDS & OPTIONS

## EXTERIOR

StrongholdVBL™ aluminum framed and vacuum bond laminated gelcoated fiberglass exterior walls (including rear wall and slide room end walls)

Magnum Truss™ Roof System with one piece seamless roofing material with 20 year warranty

Climate Shield™ zero-degree tested weather protection:

- Fully enclosed and heated underbelly (ducted)
- 35,000 BTU output furnace
- Double layer fiberglass batt insulation in ceiling and floor
- Double sided radiant barrier insulation (roof, floor and behind cap)
- PEX plumbing

HELIX Cooling System™ (industry exclusive):

- Jayco exclusive insulated dual duct design
- Directional and closeable A/C vents
- Larger return air vents with user accessible filters

JaySMART™ (Safety Markers And Reverse Travel) LED lighting (patented)

Painted fiberglass front cap with built-in specialty LED lighting

Custom automotive-grade vinyl exterior graphics package

LED exterior lighting package

Detachable shore power cord

Dual 30 lb. propane bottles with auto regulator

Pass-through storage with Slam-latch™ baggage doors

Digital TV antenna with Wi-Fi prep

Dual channel exterior marine-grade speaker

Fully enclosed, LED-lighted universal docking center:

- Selectable water connections
- Quick-connect outside shower
- Black tank flush, winterization and sanitization
- Independent satellite and whole coach cable hookups
- Water heater bypass

Battery disconnect

Under-mounted spare tire

LP quick-connect

Slide topper/awning prep

"Industry's BEST" outside kitchen (select models)

Electric auto-leveling system

## INTERIOR

Solid hardwood slide fascia

Handcrafted and glazed doors, drawers and trim

Heavy-duty, 75 lb., full-extension, steel ball-bearing drawer guides

5/8 in. tongue-and-groove joined plywood floor decking

Residential vinyl flooring (made in the USA)

Residential vinyl flooring in slideouts (no carpet)

LED dimmer switches (multiple locations)

Tri-fold hide-a-bed sofa with residential sleep surface (select models)

Theater seating (select models)

Stainless steel kitchen sink

Matte black kitchen faucet with pull-out sprayer

USB charging ports (multiple locations throughout)

Extra 120V power outlets in kitchen and slide rooms (where applicable)

Residential quilted bedspread and pillows

Gas-strutted under-bed storage

Inverter pre-wire (multiple locations)

C.P.A.P. prepped bedroom

Carbon monoxide and LP detector

Bathroom skylight

LED backlit medicine cabinet with custom framed mirror

Bathroom tile backsplash

Porcelain foot flush toilet

## CUSTOMER VALUE PACKAGE (MANDATORY)

MORryde® StepAbove™ entrance steps (main entrance) with blue LED light

15,000 BTU "Whisper Quiet" A/C

50-amp service with dual A/C ducts

Electric patio awning with integrated dimmable LED lights

60,000 BTU tankless hot water system

Custom machined aluminum rims

Rear 2 in. towing receiver with 4 pin connector

Keyed-Alike™ lock system (single key for all doors/locks)

Rooftop and ground solar prep by Go Power!®

Security monitor prep- observation camera prep (rear, sides and entrance door)

Hidden hinges on cabinet doors

Upgraded friction hinge entrance door with XL grab handle

4K Ultra HD Smart TV with fully digital HDMI® output

12V A/V system with Bluetooth® and HDMI®

Stainless steel range with glass cover

Stainless steel 30 in. over the range microwave with exhaust fan

Residential king (72 in. x 80 in.) mattress with under-bed storage

Rain-proof bathroom power vent

## 4 STAR HANDLING PACKAGE (MANDATORY)

Goodyear® Endurance® tires (made in the USA, load range 'E')

Dexter® Axles with Nev-R-Adjust® brakes and E-Z Lube® hubs

MORryde® CRE-3000™ rubberized suspension

Wet bolt fasteners, bronze bushings, and shock absorber prep

## LUXURY PACKAGE (MANDATORY)

2nd power awning with dimmable LED lighting

2nd 15,000 BTU "Whisper Quiet" A/C

JAYCOMMAND® "Smart RV" system (Pro tablet)

LED fireplace with 5,000 BTU electric space heater

Fresh Water Drinking System (patented)

Residential refrigerator

Solid-surface kitchen countertop with bamboo sink cover and strainer

Blackout roller shades

Washer/dryer prep

32 in. LED Smart TV in master bedroom

Tire Pressure Monitoring System (TPMS)

## OPTIONS

Dry Camping Package (generator prep and extra LP capacity)

Extreme Weather Package with 110V heat pads (110V heat pads with 12V heat tape on main water line)

360° security kit with 7 in. monitor

Overlander 2 Solar Package: (2) 200W solar panels, 30-amp digital controller and 1800W inverter

Frameless dual-pane tinted safety-glass windows

Canadian Standards (CSA)

Free-standing rustic table with leaf and bench seat, 2 storage and 2 folding chairs

Booth dinette (select models)

4 door gas/electric refrigerator (select models)

Residential 60 in. x 80 in. queen mattress with under bed storage

Outside griddle for JayPort system (select models)

Overlander 4 Solar Package: (4) 200W solar panels, (2) 100-amp/hour lithium heated batteries, 60-amp controller, 3000W inverter, DC/DC power converter, soft start power save main 15K A/C, soft start power save for bedroom 15K A/C, battery monitor, energy management system, roof pre-wire for additional solar panels, generator prep capable and heavy gauge steel battery enclosure

\*Indicates split tanks

FLOORPLAN	TOTAL EXTERIOR LENGTH	EXTERIOR WIDTH	EXTERIOR HEIGHT (WITH A/C)	INTERIOR HEIGHT (MAIN)	INTERIOR HEIGHT (UPPER DECK)	UNLOADED VEHICLE WEIGHT	DRY HITCH WEIGHT	GVWR	CARGO CARRYING CAPACITY	FRESH WATER CAPACITY	GRAY WASTE WATER CAPACITY	BLACK WASTE WATER CAPACITY	SLEEPING CAPACITY
317RLOK	36' 3"	8' 1"	12' 10"	8' 7"	6' 6"	10,800	2,035	12,995	2,195	81	87*	50	4
319MLOK	36' 7"	8' 1"	12' 9"	8' 7"	6' 6"	10,830	2,020	12,995	2,165	81	87*	50	3-5
321RSTS	36' 4"	8' 1"	12' 10"	8' 7"	6' 6"	10,740	1,980	12,900	2,160	81	87*	50	4-6
335RDOK	37' 3"	8' 1"	12' 10"	8' 7"	6' 6"	10,810	2,045	12,995	1,175	81	87*	50	6-8
355MBQ	41' 10"	8' 1"	12' 9"	8' 7"	6' 6"	12,845	2,360	15,200	2,355	81	87*	50	8-10
370FB	40' 3"	8' 1"	12' 9"	8' 7"	6' 6"	11,905	2,365	14,000	2,095	81	87*	50	3-4

Meet your Jayco Dealer



Scan QR code for specification definitions

Some specs at the time of print may include estimates. For the most updated information, please visit [Jayco.com](http://Jayco.com)

Jayco, Inc. | P.O. Box 460 | Middlebury, IN 46540

See dealer for further information and prices. All information in this brochure and on [www.jayco.com](http://www.jayco.com) is the latest available at the time of publication approval. Jayco reserves the right to make changes and to discontinue models without notice or obligation. Photography may show optional equipment or props used for decoration purposes only. RVs built for sale in Canada may differ to conform to Canadian codes. JAYCO and the JAYCO BIRD IN FLIGHT are registered trademarks of Jayco, Inc. Printed in USA 1/23 ©2023 Jayco, Inc. 2032587.2023



Jayco - Part of Jayco Family of Companies